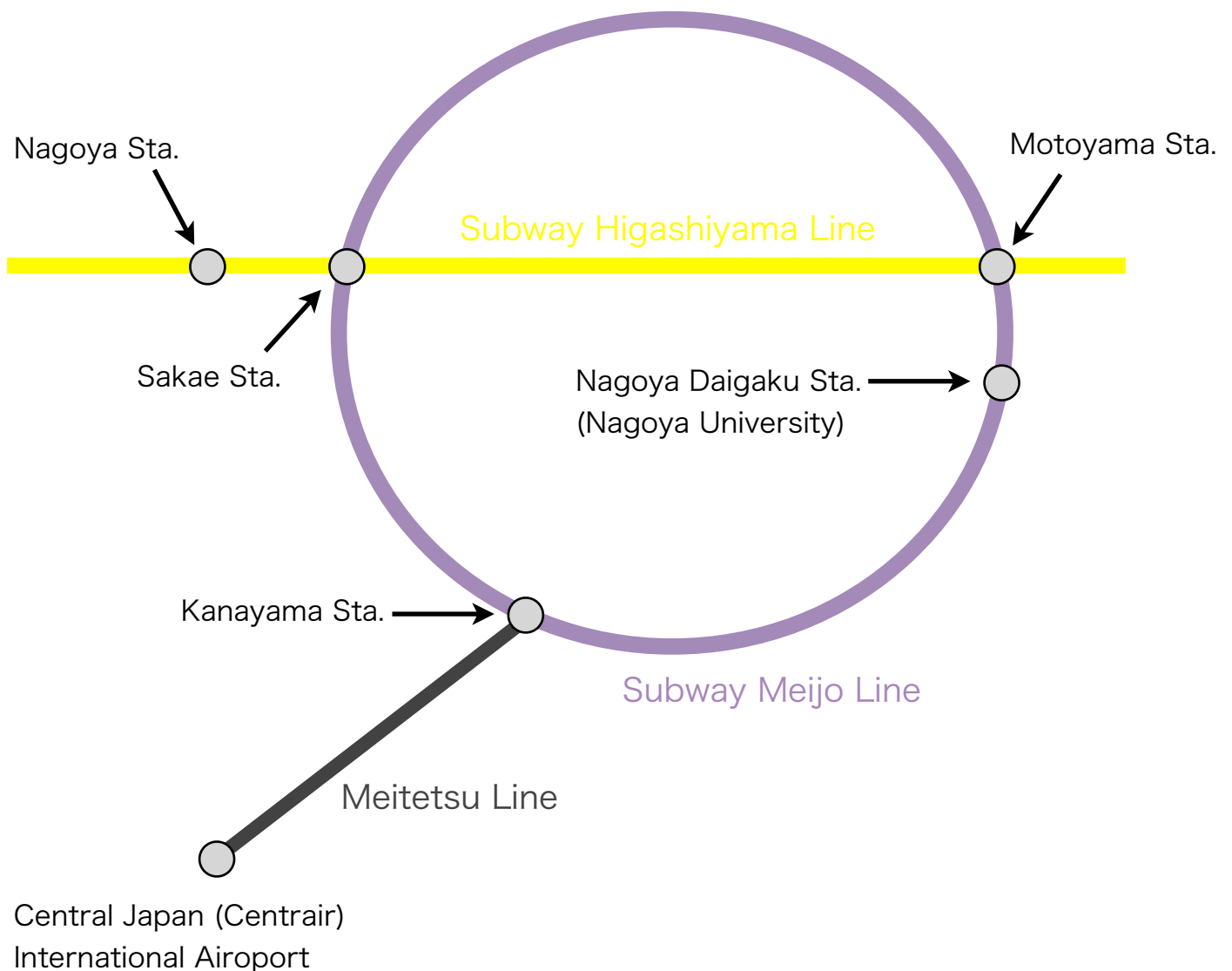


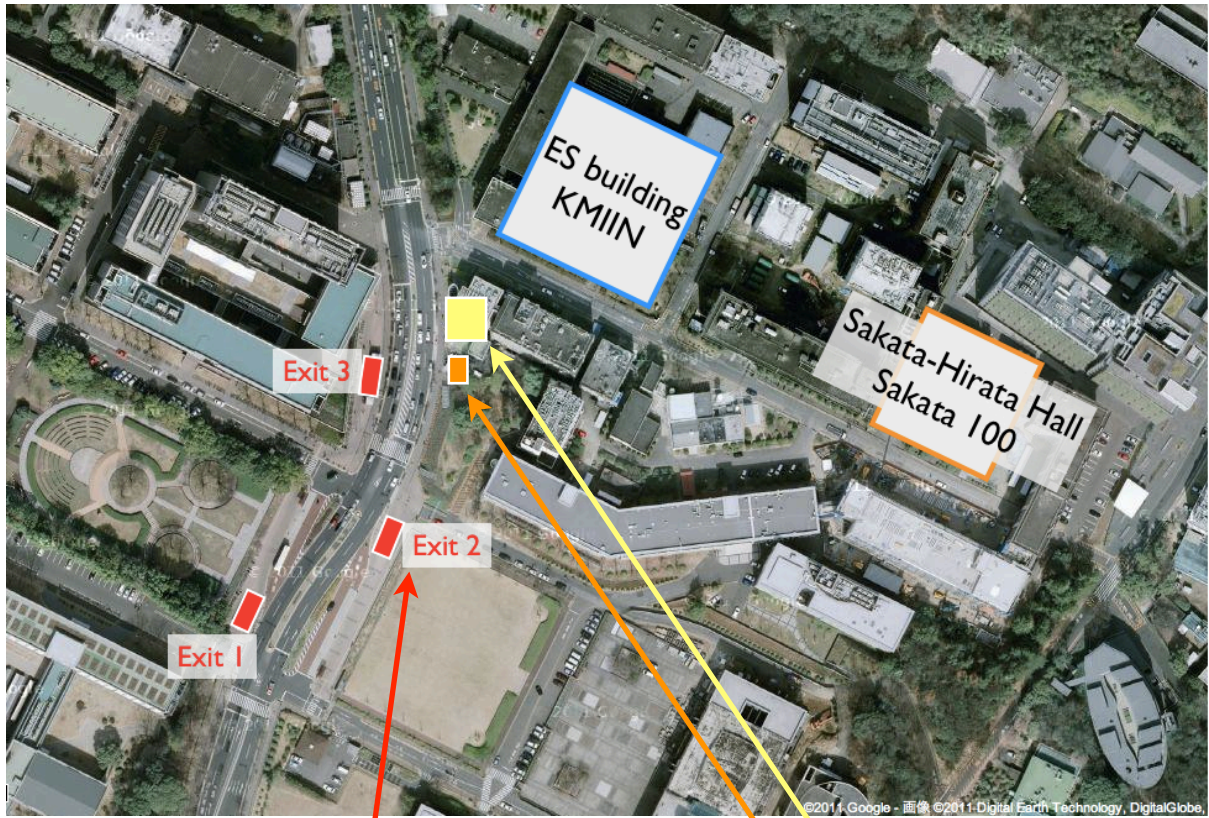
Access to Nagoya University (Higashiyama Campus)

From Nagoya Station: Take the Subway Higashiyama Line (bound for Fujigaoka) to Motoyama Sta. (15 minutes), then transfer to the Subway Meijo Line (clockwise direction) to Nagoya Daigaku Sta. (2 minutes). Nagoya University Campus is just off the subway exit.

From Centrair (Central Japan International Airport): Take the Meitetsu Line to Kanayama Sta. (30 min.), then transfer to the Subway Meijo Line (counterclockwise direction) to Nagoya Daigaku Sta. (21 min.).



Access to conference sites



Subway station

Post office
ATM

For those who stay at hotels in Sakae area

From Nagoya Station to Sakae Station: Take the Subway Higashiyama Line (bound for Fujigaoka) to Sakae Sta. (5 minutes).

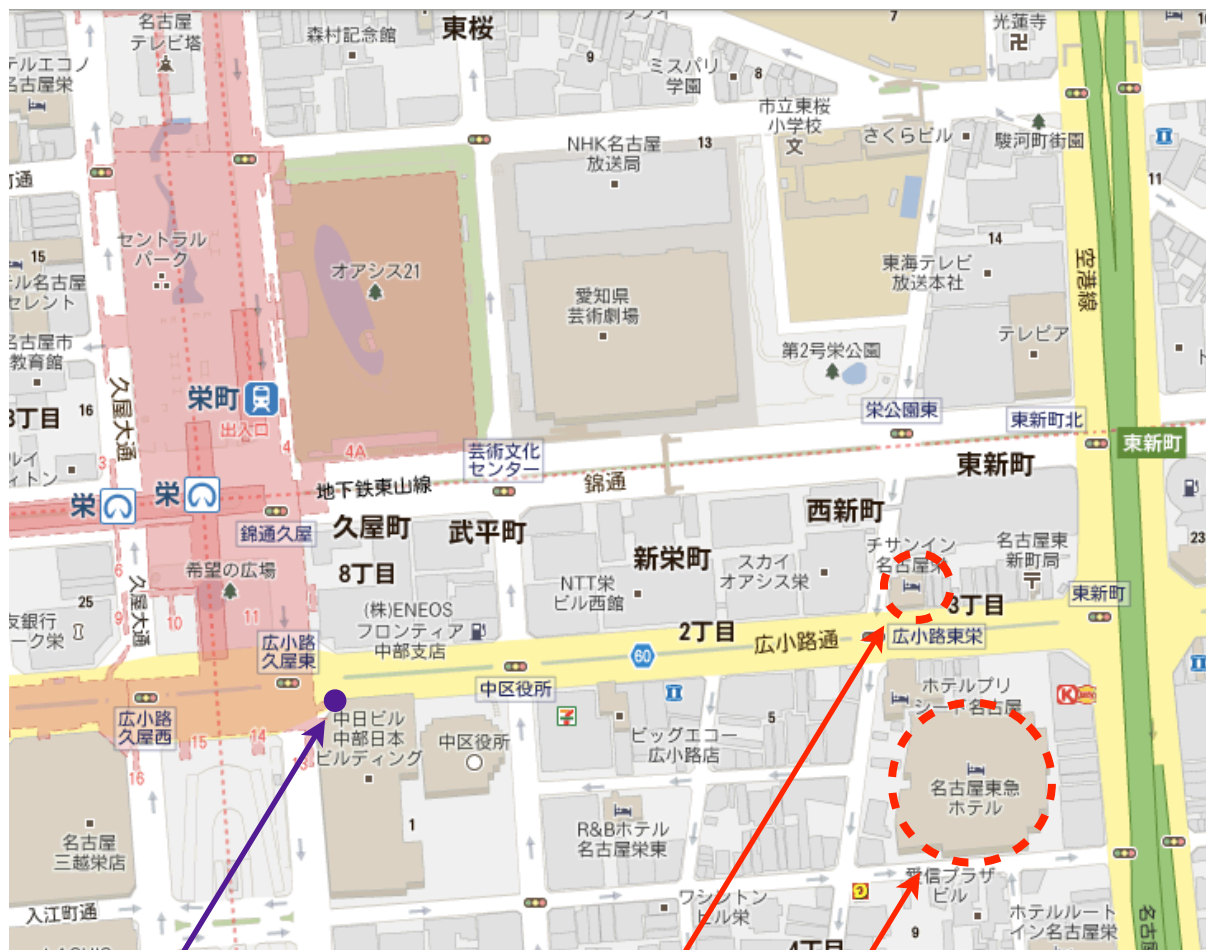
From Centrair (Central Japan International Airport): Take the Meitetsu Line to Kanayama Sta. (30 min.), then transfer to the Subway Meijo Line (clockwise direction) to Sakae Sta. (7 min.).

From Subway Sakae Station to Nagoya University: Take the Subway Higashiyama Line (bound for Fujigaoka) to Motoyama Sta. (15 minutes), then transfer to the Subway Meijo Line (clockwise direction) to Nagoya Daigaku Sta. (Higashiyama Campus is just off the subway exit.).

Alternatively, you can take Meijo line directly to Nagoya Daigaku station. It takes 22/27 minutes if you take clockwise/counterclockwise direction.

For those who stay at hotels in Sakae area

Sakae area map



Subway Sakae Sta.
12 Exit



Chisun Inn Nagoyasakae



NAGOYA TOKYU HOTEL